



The State of Early Care and Learning in Atlanta

Atlanta Early Learning Leadership Council
February 28th, 2018

Hanah Goldberg
Director of Research
WWW.GEEARS.ORG



Child Well-Being in the City of Atlanta

- 31,521 children 0-5



Of every 20 children ages 0-5 in the City of Atlanta, 11 are economically disadvantaged, including 8 living in poverty.⁵

- 60% Black/African American
- 32% White
- 6% Hispanic

Between 12% (Fulton) and 15% (DeKalb) of births are to mothers *without a high school diploma*



32% of 3rd graders are reading proficiently

City of Atlanta Early Childhood Profile

The Georgia Early Childhood Profile are produced by GEARs: Georgia Early Education Alliance for Ready Students, with technical assistance from Neighborhood News. GEARs is a nonpartisan, nonprofit organization whose vision is to ensure that, by 2020, all Georgia children will enter kindergarten prepared to succeed and be on a path to "read to learn" by third grade. These profiles highlight indicators relevant to early childhood and school readiness. To learn more, please visit www.gears.org.

Early Care and Education Providers	Atlanta	State
Total Early Learning Providers ¹	227	5,043
Child Care Learning Centers	163	2,562
- Serve infants	84%	85%
- Serve toddlers	94%	92%
- Serve preschoolers	90%	90%
Family Child Care Learning Homes	20	1,578
- Serve infants	83%	87%
- Serve toddlers	97%	95%
- Serve preschoolers	80%	92%
Other Providers ²	35	903
Total Licensed Capacity³	18,987	305,919
Quality Rated ⁴	37%	30%
Child Care Learning Centers	37%	30%
Quality Rated ⁴	18,813	296,467
- 1-star programs	17%	15%
- 2-star programs	4%	5%
- 3-star programs	17%	19%
Family Child Care Learning Homes	114	9,462
Quality Rated ⁴	31%	24%
- 1-star programs	2%	10%
- 2-star programs	17%	6%
- 3-star programs	10%	7%

Third Grade Assessment Results	Atlanta	State
Students Tested, ELA ⁵	4,678	136,238
Proficient/Distinguished Learners:	32%	36%
- White	77%	49%
- Black or African American	19%	24%
- Hispanic or Latino	25%	26%
- Economically Disadvantaged	16%	22%
- Limited English Proficiency	18%	26%
- Economically Disadvantaged	18%	26%
Students Tested, Math ⁶	4,690	136,670
Proficient/Distinguished Learners:	34%	42%
- White	79%	56%
- Black or African American	21%	27%
- Hispanic or Latino	29%	35%
- Economically Disadvantaged	26%	32%
- Limited English Proficiency	20%	32%
- Economically Disadvantaged	20%	32%

Quality Rated Licensed Early Learning Providers ⁷	Atlanta	State
Not Participating	20%	15%
1-star	15%	15%
2-star	15%	15%
3-star	10%	10%

Program Enrollment	Atlanta	State
Kindergarten ⁸	8,888	126,400
Lottery funded Georgia Head Start and Early Head Start	2,682	77,393
At-risk children served	11,570	49%

Living Arrangements by Household

Population under age 6 ⁹	Atlanta	State
Parent (include adoptive)	31,521	825,969
- Marital parents (both present)	81%	82%
- Single parent	42%	56%
- Other relative	38%	26%
- Non-relative	17%	16%
- Non-parent	2%	2%

Parental Employment

Population under age 6 living with parent ¹⁰	Atlanta	State
Both parents or only parent in labor force	38,904	766,730
- labor force	73%	65%
- One parent in labor force, one not	14%	25%
- No parent in labor force	13%	10%

Family, Health, and Services

Children under age 6 living below ¹¹	Atlanta	Atlanta	State
	#	%	%
100% Flawry	12,023	40%	29%
150% Flawry	16,004	50%	42%
200% Flawry	18,154	57%	53%
Children under age 6 without health insurance ¹²	1,765	5%	6%
Limited English-speaking households ¹³	3,056	2%	3%

Child Maltreatment Reports (allegations)¹⁴

	DeKalb	Fulton	State
Births to mothers who are not high school graduates ¹⁵	30.2 ¹	32.3 ¹	38.3 ¹
Births to girls ages 15-19 ¹⁶	15%	12%	15%
Low birth weight babies ¹⁷	26.1 ¹	19.3 ¹	25.7 ¹
Prone to asthma ¹⁸	10%	11%	10%
Asthma-related ER visits (ages 0-4) ¹⁹	11%	11%	11%
Asthma-related ER visits (ages 0-4) ¹⁹	170.5 ¹	95.1 ¹	116.0 ¹

Children by Race and Ethnicity

Population under age 5 ²⁰	Atlanta	State
White	27,187	660,941
Black or African American	32%	53%
Asian and Pacific Islander	60%	34%
Other race or multiracial	2%	4%
Hispanic or Latino (any race)	6%	10%

Economic Status

Of every 20 children ages 0-5 in the City of Atlanta, 11 are economically disadvantaged, including 8 living in poverty.⁵

Children who attend high-quality early education are:

- MORE LIKELY to graduate high school, attend college, or enter a higher wage household²¹
- LESS LIKELY to be in poverty, have a criminal record, or be arrested²²
- MORE LIKELY to be employed²³

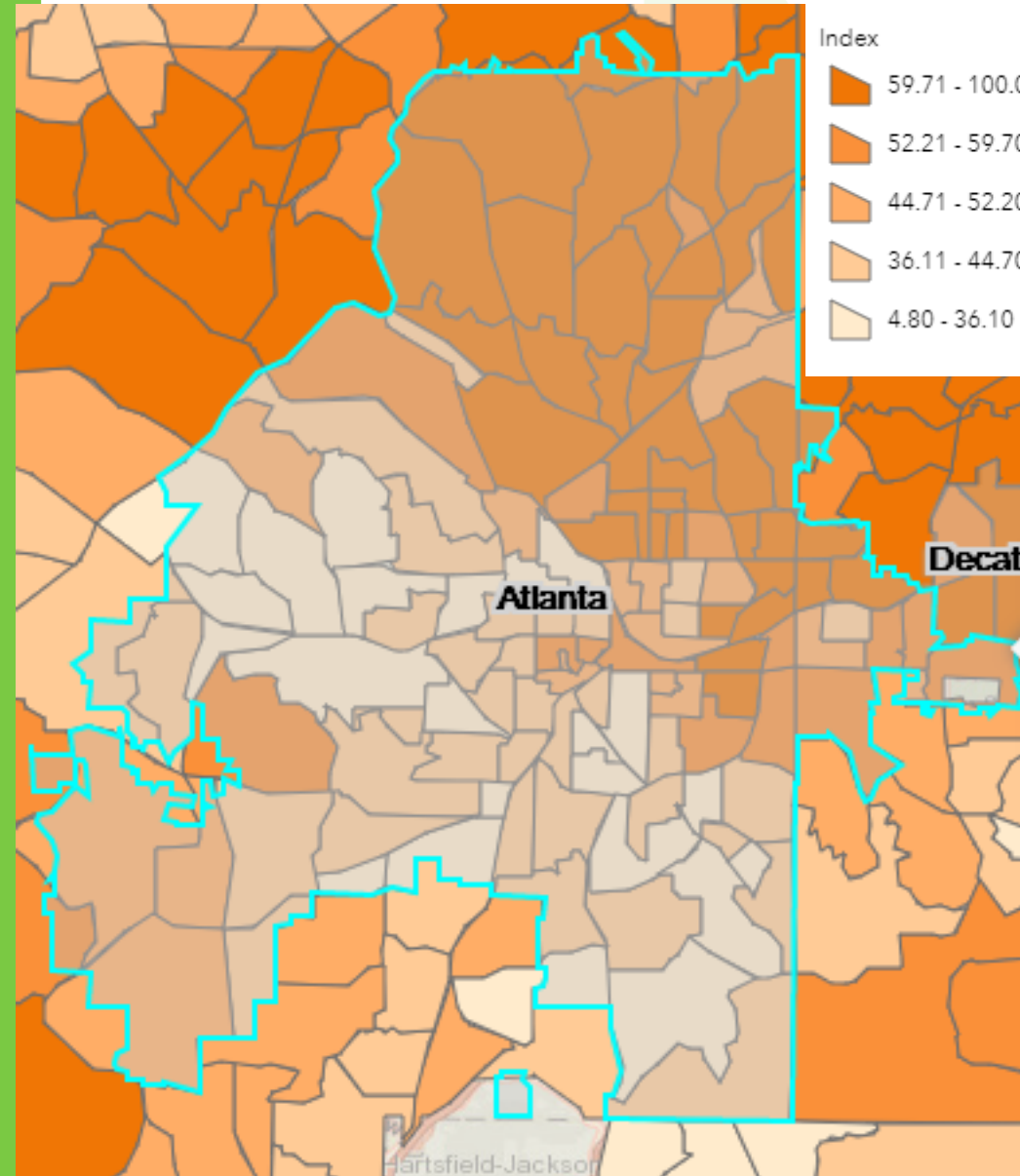
BE INVOLVED in your child's early education

SAVE \$13 per year on average for each additional hour of professional training, on average

Source:

- Georgia Department of Education, 1/1/2018
- Georgia Department of Education, FTE 2018-1
- The Office of Head Start Program Information Report, 1/2018
- Georgia Governor's Office of Student Achievement, SY 2017
- U.S. Census Bureau, American Community Survey (2012-14)
- U.S. Census Bureau, 2010 Demographic Census
- Pathways to Court Improvement (2014)
- Georgia Department of Public Health, OASIS (annual average 2014-16)

Child Well-Being in the City of Atlanta



GEEARS Early Childhood Index

- Access to Quality Rated **Child Care**
- % of Children 0-4 below **poverty**
- % of Population 25+ w/o High School **Diploma**
- % of Adults with **Limited English Proficiency**
- % of Children w/ no **Parent in the Labor Force**
- % of **Births to Mothers w/o High School Diploma**
- % **Low Birthweight** Births
- % of Children Ages 0-4 Receiving **Food Stamps**
- % of **3rd graders** scoring "proficient" or higher on **ELA** Georgia Milestones
- Substantiated **child abuse/neglect** rate

Child Care Center

Family Child Care Home

Part-time or
faith-based
programs

Nanny

Family, friend,
or neighbor care

Waitlists

On-site child care

Unregulated/
“underground” care





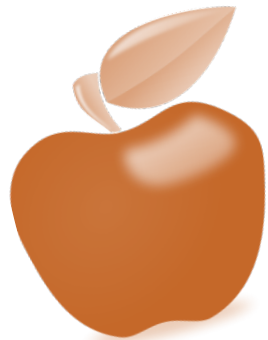
The Cost of Care

The average weekly cost for center-based infant care in the Metro region is \$198.81¹

A law enforcement officer living in the City of Atlanta makes an average of \$48,800 annually, or \$938/week



Average weekly tuition for a 6-month-old and 3-year-old: \$375, or approximately 40% of gross pay



In Georgia, an assistant child care teacher makes an average of \$8.85/hour, or \$354/week²

¹ Georgia Child Care Market Rate Survey 2016-2017 (Zone 1)

² Economic Impact of the Early Care and Education Industry in Georgia (2016)



What are Atlanta-area parents saying about the process of finding child care?

“I planned a year in advance on when I would enroll my children in child care.”

“I needed a 24 hour-daycare in my area and they either no longer carry the service or have transportation available for my children.”

“It was hard to find the right place with the right location and integrity.”

“The hours are big to me, and then location, and then cost. I really wanted my children to go to this day care right next to my job, but they were asking \$230 per child per week.”

“Without CAPS [child care subsidy] funding, I couldn't work or attend school, which means I'd be homeless, stuck, no hope or support to move forward in life.”

“If I didn't have CAPS [child care subsidy], I would have to find a family member or friend that could provide care because the cost of a child care center would be too expensive.”

Overview of Early Learning Programs and Initiatives



Overview of Early Learning Programs – Key Data Points



- Approximately 2,680 funded slots in the City of Atlanta (includes APS and CCLCs)
- The majority (90%) of Georgia Pre-K slots in the City of Atlanta are located either in APS (not eligible for Quality Rated) or a CCLC participating in Quality Rated



- 37% of the total licensed child care capacity in the City of Atlanta is located in a program that is Quality Rated.
- Most eligible child care programs (72%) in the City are at least participating in Quality Rated.



- Funding is limited. Only an estimated 11% of income-eligible children receive assistance.¹



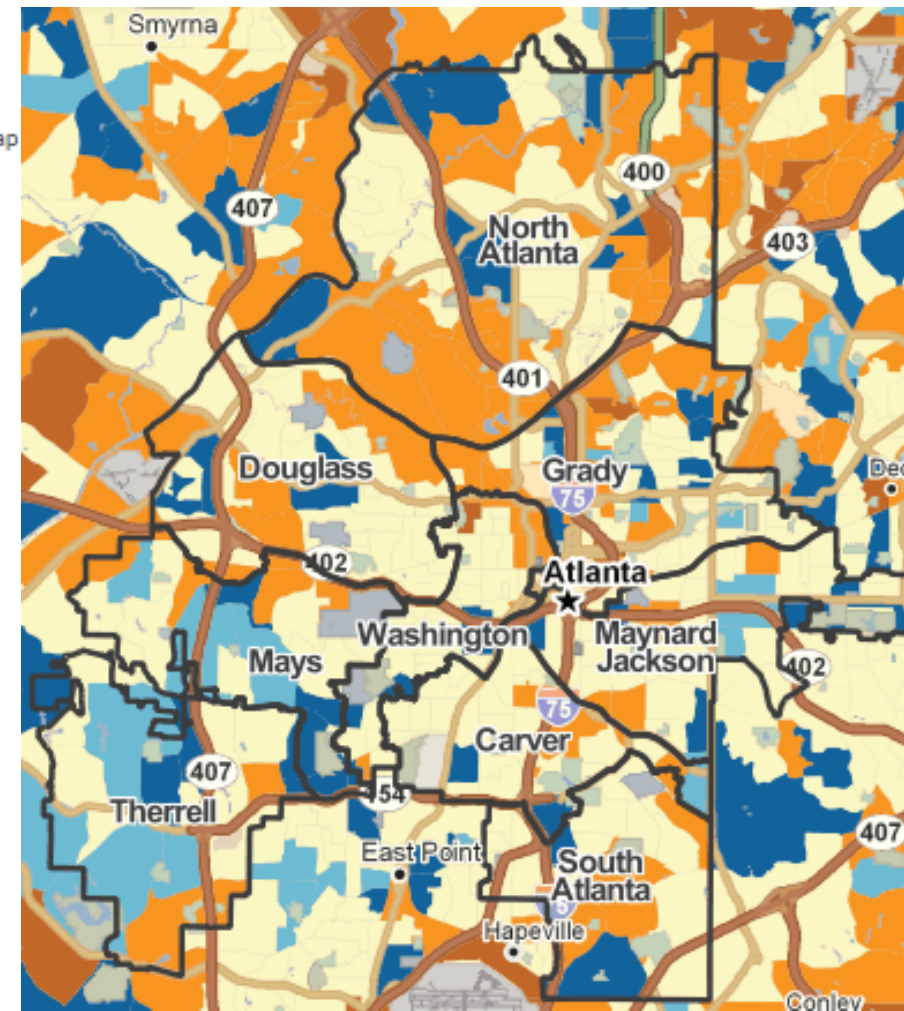
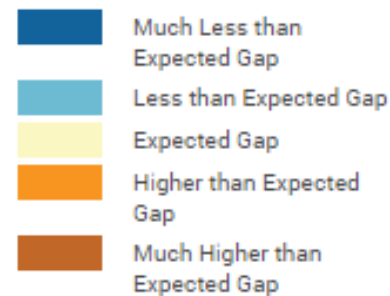
Child Care Supply, Demand, and Shortage in Atlanta



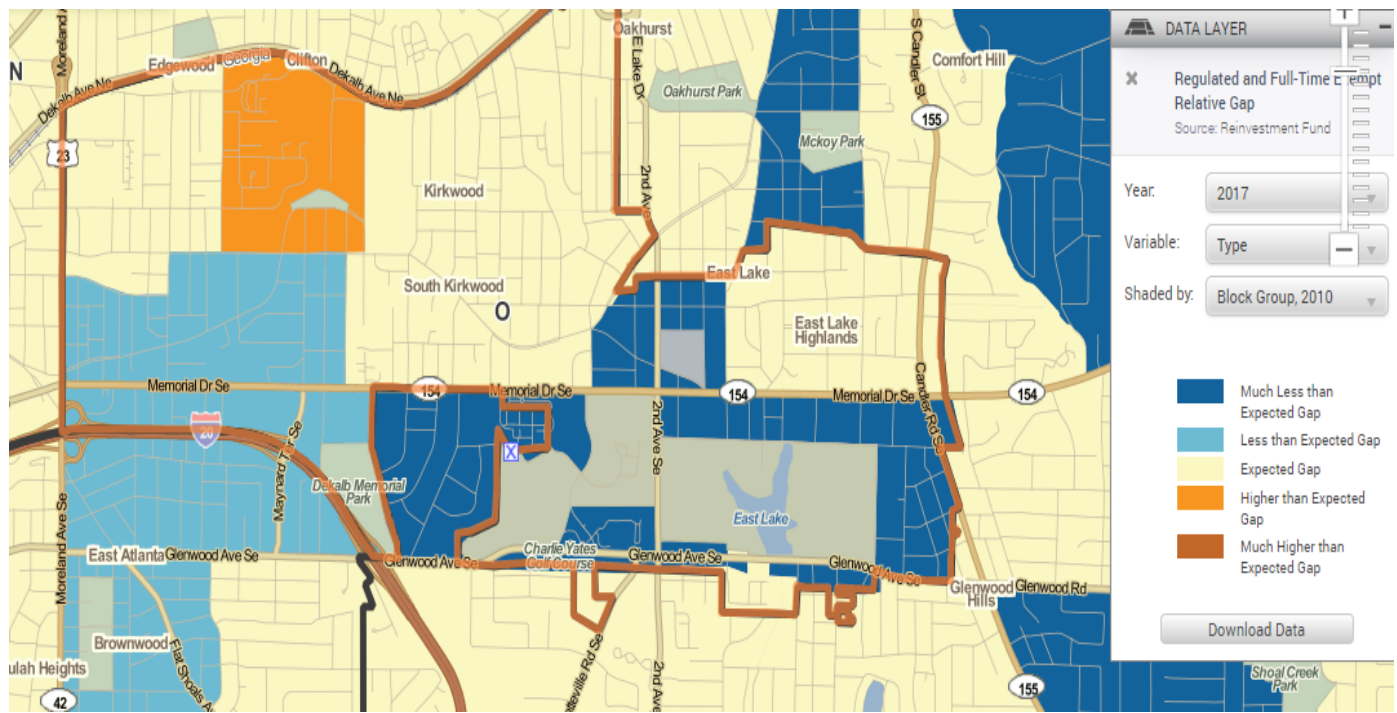
ATL ACCESS MAP

ATLANTA CHILD CARE AND EARLY LEARNING SUPPLY STATUS

- About 1/3 of maximum demand is unmet—but that is not uniform across the 5-county region
- Almost 90% of the region's childcare is regulated (or specifically exempt)
 - Compares favorably to other areas studied (e.g., Philadelphia has approx. 25% unlicensed and New Jersey areas have nearly 50%)
- High-gap areas are found across the region
 - About 11% of areas across the region had high gaps and elevated poverty rates

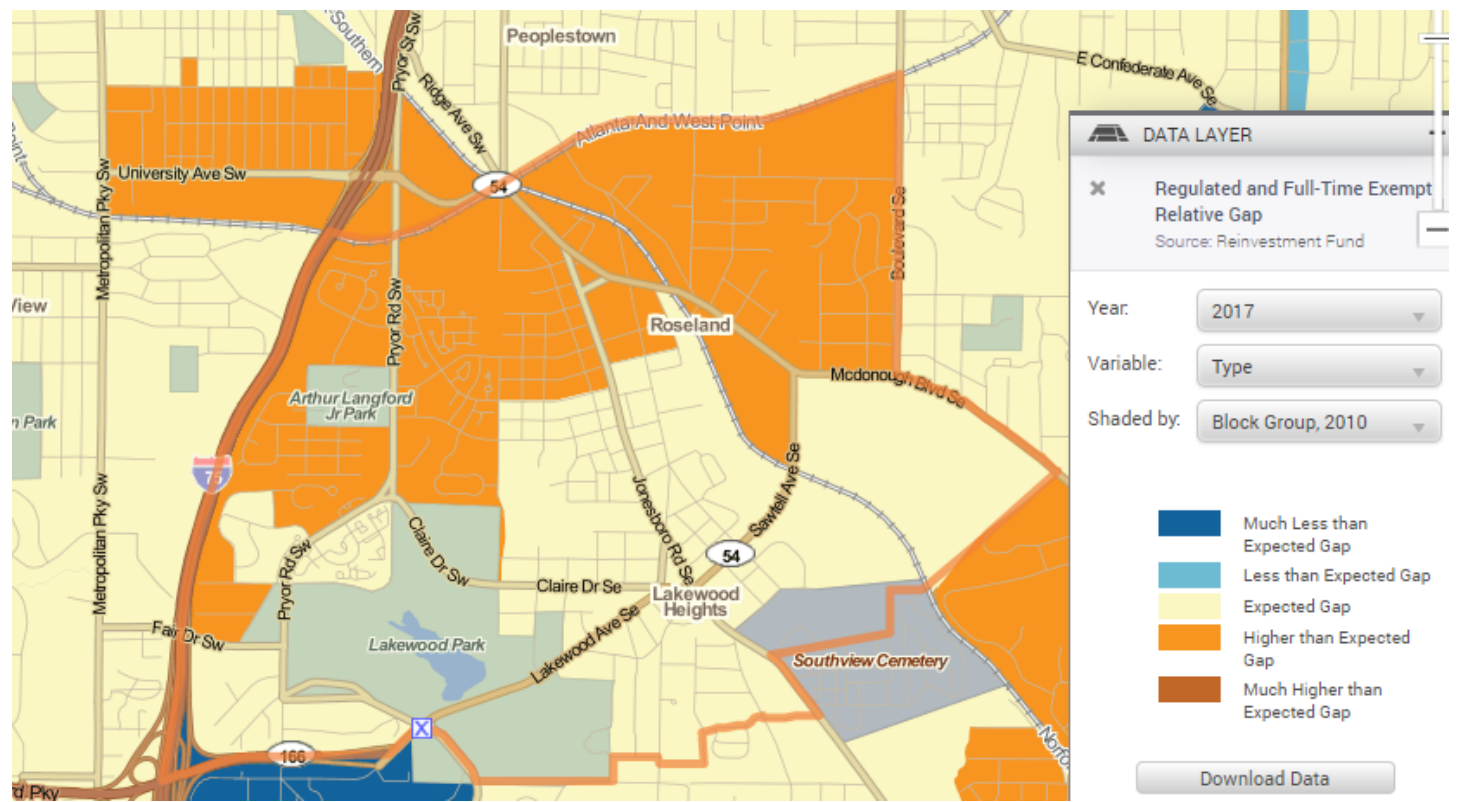


Neighborhood Snapshot: East Lake/ NPU O



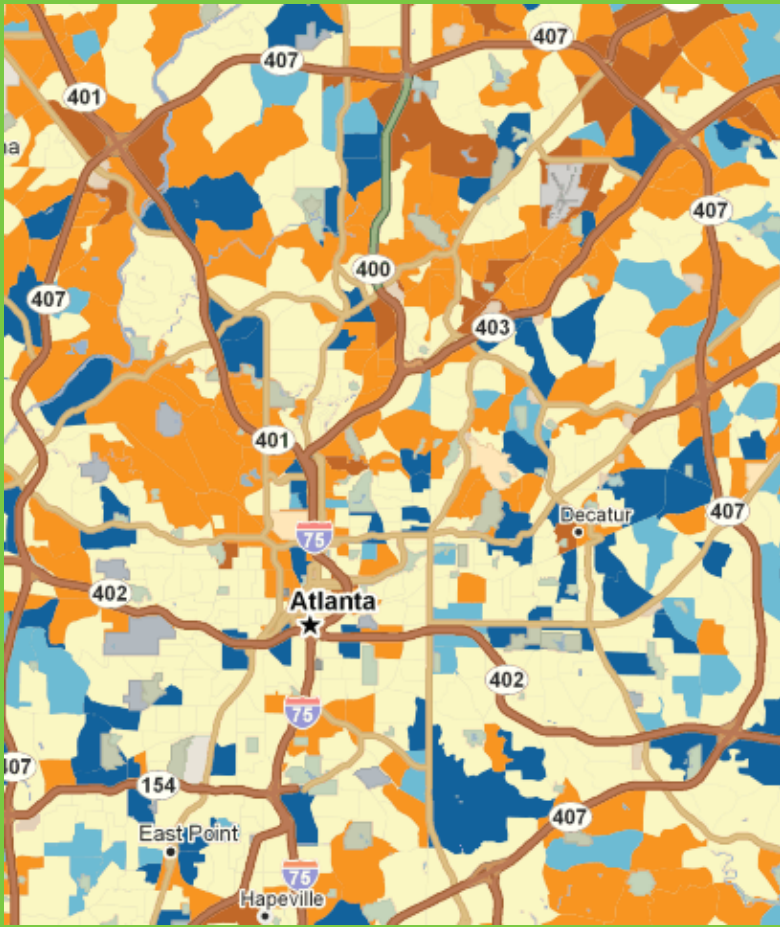
	NPU O	City of Atlanta
% of residents under 5	7.4	6.4
% of families with children under 5 in poverty	25.8	33.5
Median household income	\$23,000 - \$95,729 (block group range)	\$47,236
% non-white residents	56.37	59.95
% licensed child care capacity that is Quality Rated (as of March, 2017)	56	28

Neighborhood Snapshot: South Atlanta/ NPU Y



	NPU Y	City of Atlanta
% of residents under 5	7.2	6.4
% of families with children under 5 in poverty	23.1	33.5
Median household income	\$16,675 - \$45,990 (block group range)	\$47,236
% non-white residents	86.64	59.95
% licensed child care capacity that is Quality Rated (as of March, 2017)	5	28

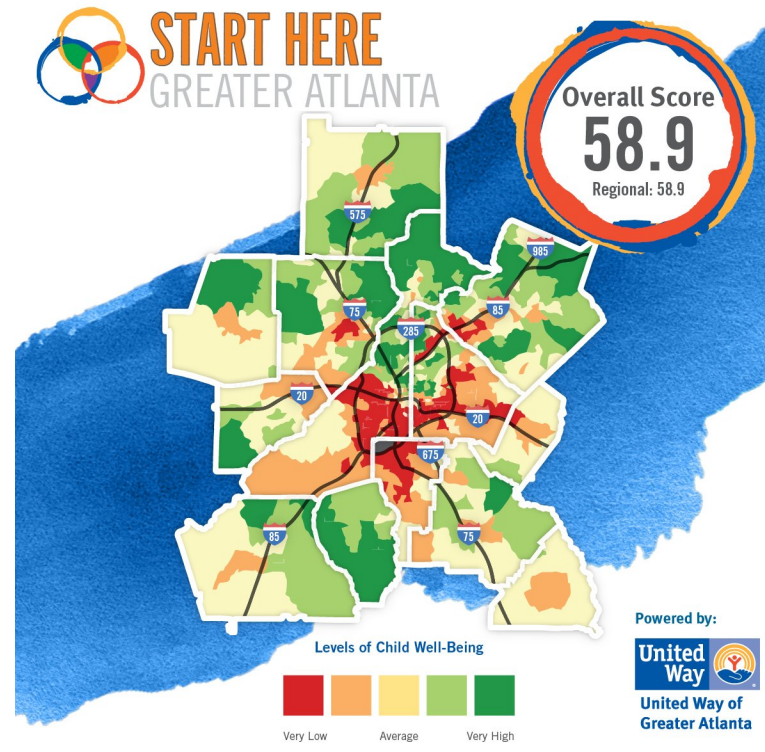
One Mother's Journey



Additional Resources



The GEEARS Readiness Radar



Child Well-Being Index



A Framework for School Readiness in Georgia



School Readiness Framework