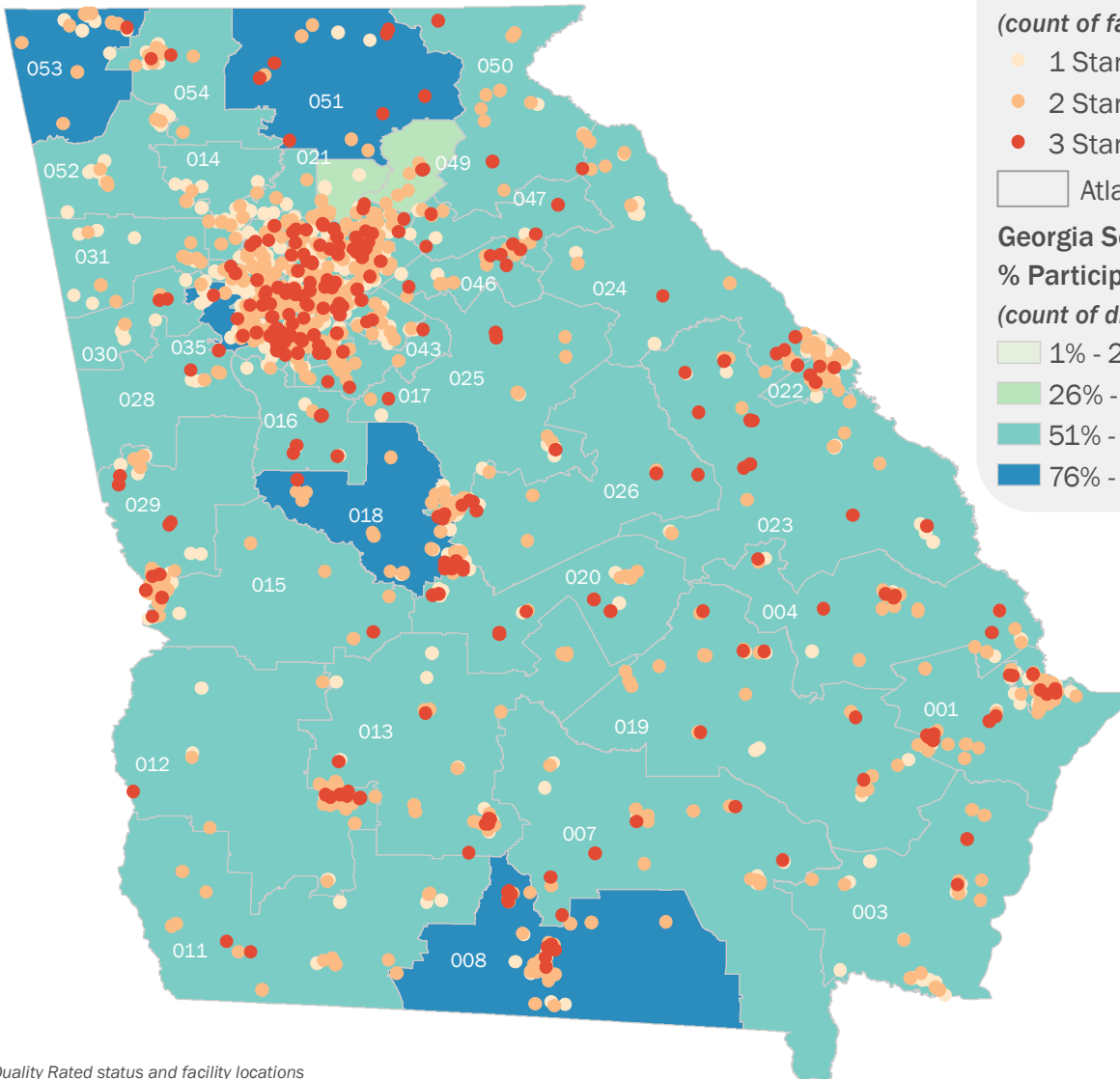
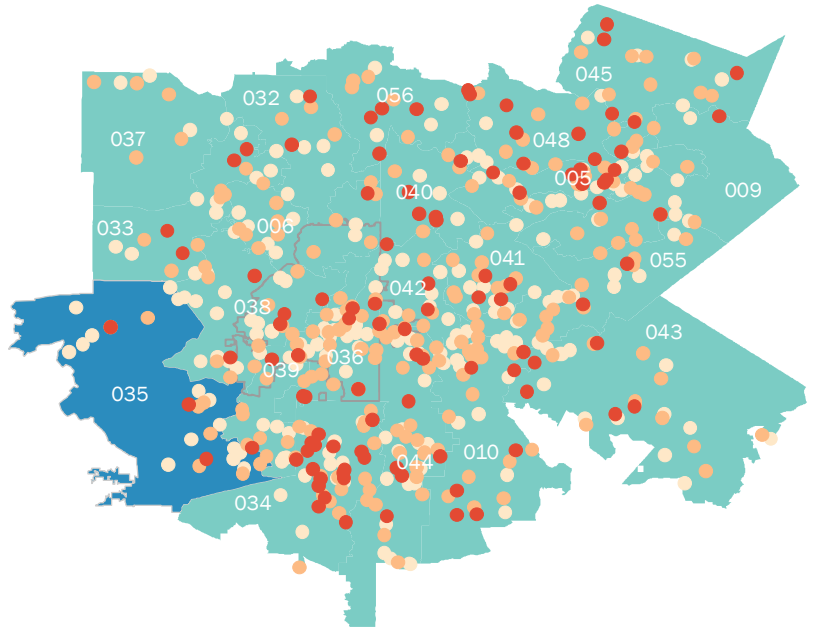


Rated Facilities & Participation Rates by Georgia Senatorial District

- 4,901 Total Eligible facilities
- 3,031 Total Participating facilities
- 1,459 Total Star Rated facilities
- 62% of Eligible facilities are Participating in Quality Rated
- 30% of Eligible facilities are Star Rated
- 70% of the Licensed Capacity is Participating in Quality Rated
- 35% of the Licensed Capacity is Star Rated
- 82% of CAPS certificates are in Participating facilities
- 38% of CAPS certificates are in Star Rated facilities



Quality Rating

(count of facilities rated)

- 1 Star (507)
- 2 Star (684)
- 3 Star (268)

Atlanta City Limit

Georgia Senatorial Districts

% Participating in Quality Rated

(count of districts)

- 1% - 25% (0)
- 26% - 50% (2)
- 51% - 75% (49)
- 76% - 100% (5)