

# 2020 GEORGIA VOTER POLL



**GEEARS**  
GEORGIA EARLY EDUCATION  
ALLIANCE FOR READY STUDENTS



Now more than ever, Georgia voters recognize the importance of early care & learning and policies that support working families. In a divided political environment, **support for early learning is consistently strong and overwhelmingly bipartisan**. Voters support family-friendly policies, whether or not they have young children.

  
**600**

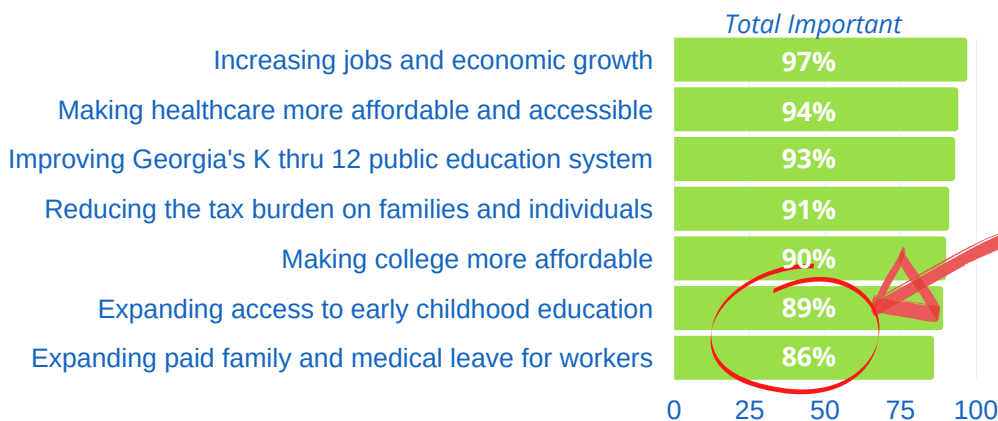
likely Georgia voters\*

## PRESSING ISSUES FACING GEORGIANS

### Early Childhood Education (ECE) and paid leave are important issues to Georgians.

Expanding access to early childhood education and paid family and medical leave are priorities for Georgia voters--observed at levels similar to other top issues. Roughly 9 in 10 voters identified these issues as important.

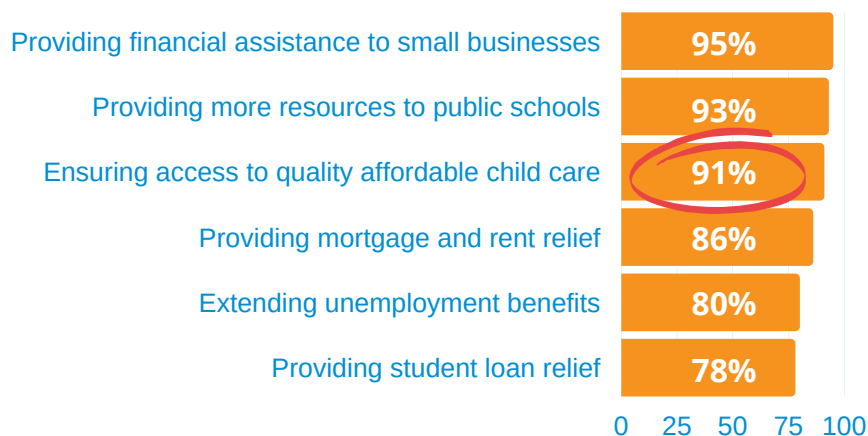
*Please tell me how important each issue is to you personally – is it very important, somewhat important, not that important or not at all important?*



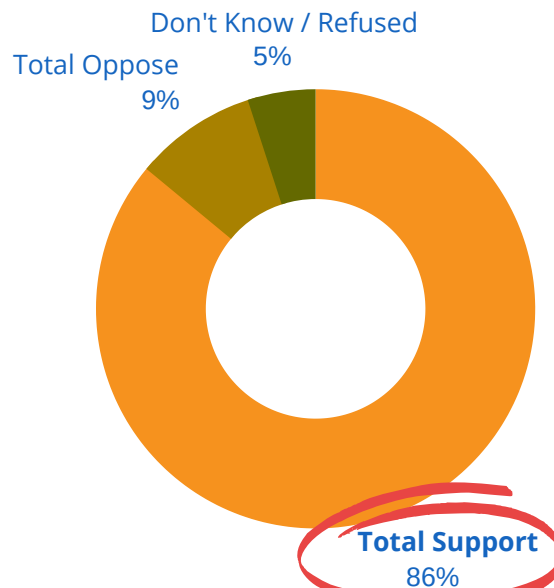
## FEDERAL ACTION ON CHILD CARE

### Georgians Say Congress Should Prioritize Quality, Affordable Child Care in Wake of COVID-19 Pandemic

*From the following list, please tell me if each should be a high priority, somewhat of a priority, not much of a priority or not at all a priority for Congress to address as a result of the coronavirus pandemic:*



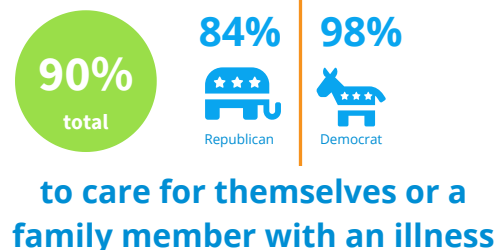
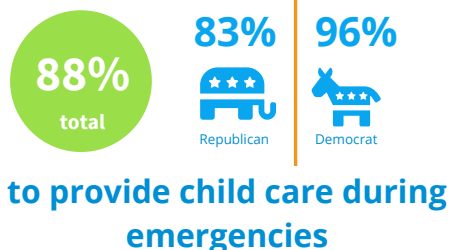
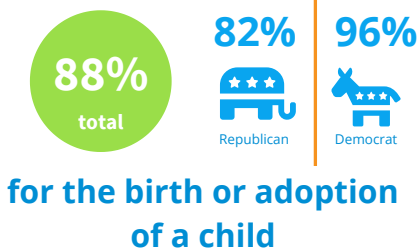
### Georgians Support Targeted Financial Assistance to Child Care Industry



\*Respondents were from across Georgia, and included a broad cross-section of likely voters. Interviews were conducted over landline and cell phone from Sept. 14-17, 2020. Selection was random and interviews were stratified by county, race/ethnicity, age and gender to correlate with current voter registration statistics and actual voter turnout from previous even-year November general elections. The poll had an accuracy of +/- 4.0% at 95% confidence interval.

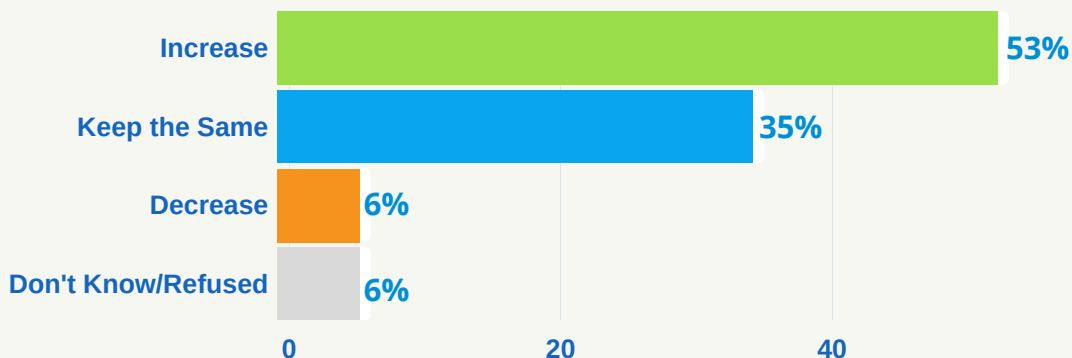
# VOTERS SUPPORT FAMILY-FRIENDLY POLICIES

## Nearly 9 in 10 Georgia Voters Support Paid Family Leave



### Georgians Support Maintaining or Increasing Funding for Early Childhood Education (ECE)

The majority of voters (88%) believe funding for early childhood education should be increased or maintained.



## Georgia Voters Support Variety of ECE Policies



## Support for Georgia's Pre-K Is Higher Than Ever

Greater than nine in ten (91%) support Georgia's free, lottery-funded voluntary Pre-K.

**2010: 83%**  
**2014: 87%**  
**2018: 80%**

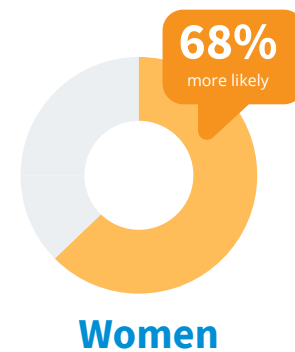
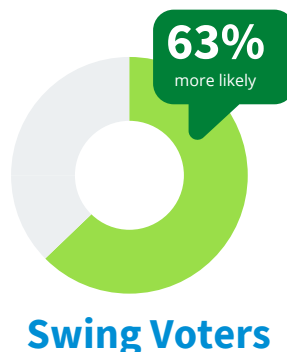


# VOTERS SUPPORT ECE-FRIENDLY CANDIDATES



are more likely to vote for candidates supportive of early care & learning

Would you be more likely or less likely to vote for a candidate for political office who **SUPPORTS** policies that give more families access to quality child care and preschool?



See full results, including crosstabs, at [www.GEARS.org/POLLING](http://www.GEARS.org/POLLING)